



Product Service

CERTIFICATE

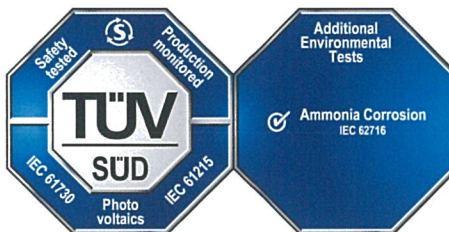
No. Z2 14 09 84700 016

Holder of Certificate: **Phono Solar Technology Co., Ltd**

No. 1 Xinghuo Rd.,
Nanjing Hi-tech Zone,
210032 Nanjing
PEOPLE'S REPUBLIC OF CHINA



Certification Mark:



Product:

**Crystalline Silicon Terrestrial Photovoltaic (PV) Modules
Mono-Crystalline Silicon Photovoltaic Module**

The product was tested on a voluntary basis and complies with the essential requirements. The certification mark shown above can be affixed on the product. It is not permitted to alter the certification mark in any way. In addition the certification holder must not transfer the certificate to third parties. See also notes overleaf.

Test report no.: 704061410904-00

Valid until: 2019-09-24

Date, 2014-09-29

(Zhulin Zhang)

Page 1 of 2





Product Service

CERTIFICATE

No. Z2 14 09 84700 016

Model(s):

PS280M-24/T, PS285M-24/T, PS290M-24/T, PS295M-24/T,
 PS300M-24/T, PS305M-24/T, PS310M-24/T, PS315M-24/T,
 PS320M-24/T, PS325M-24/T, PS330M-24/T, PS335M-24/T,
 PS340M-24/T, PS255M-22/W, PS260M-22/W, PS265M-22/W,
 PS270M-22/W, PS275M-22/W, PS280M-22/W, PS285M-22/W,
 PS290M-22/W, PS295M-22/W, PS300M-22/W, PS305M-22/W,
 PS310M-22/W, PS215M-20/U, PS220M-20/U, PS225M-20/U,
 PS230M-20/U, PS235M-20/U, PS240M-20/U, PS245M-20/U,
 PS250M-20/U, PS255M-20/U, PS260M-20/U, PS265M-20/U,
 PS270M-20/U, PS275M-20/U, PS280M-20/U, PS195M-18/V,
 PS200M-18/V, PS205M-18/V, PS210M-18/V, PS215M-18/V,
 PS220M-18/V, PS225M-18/V, PS230M-18/V, PS235M-18/V,
 PS240M-18/V, PS245M-18/V, PS250M-18/V, PS255M-18/V,
 PS130M-12/G, PS135M-12/G, PS140M-12/G, PS145M-12/G,
 PS150M-12/G, PS155M-12/G, PS160M-12/G, PS165M-12/G,
 PS170M-12/G, PS170M-24/F, PS175M-24/F, PS180M-24/F,
 PS185M-24/F, PS190M-24/F, PS195M-24/F, PS200M-24/F,
 PS205M-24/F, PS210M-24/F.

Parameters:

Rated Output Power
at STC:

280 W, 285 W, 290 W, 295 W,
 300 W, 305 W, 310 W, 315 W,
 320 W, 325 W, 330 W, 335 W,
 340 W, 255 W, 260 W, 265 W,
 270 W, 275 W, 280 W, 285 W,
 290 W, 295 W, 300 W, 305 W,
 310 W, 215 W, 220 W, 225 W,
 230 W, 235 W, 240 W, 245 W,
 250 W, 255 W, 260 W, 265 W,
 270 W, 275 W, 280 W, 195 W,
 200 W, 205 W, 210 W, 215 W,
 220 W, 225 W, 230 W, 235 W,
 240 W, 245 W, 250 W, 255 W,
 130 W, 135 W, 140 W, 145 W,
 150 W, 155 W, 160 W, 165 W,
 170 W, 170 W, 175 W, 180 W,
 185 W, 190 W, 195 W, 200 W,
 205 W, 210 W.

Construction:

Framed, with Junction box,
Cable and Connectors.

Application Class:

Class A

Maximum System Voltage:

1000 V DC

Fire Safety Class:

Class C

Tested according to:

IEC 61215:2005
 IEC 61730-1/A2:2013
 IEC 61730-2/A1:2011
 IEC 62716:2013

Production Facility(ies):

84700



Product Service

CERTIFICATE

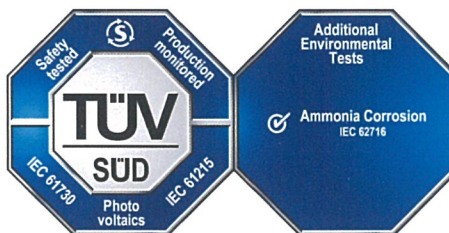
No. Z2 14 09 84700 015

Holder of Certificate: **Phono Solar Technology Co., Ltd**

No. 1 Xinghuo Rd.,
Nanjing Hi-tech Zone,
210032 Nanjing
PEOPLE'S REPUBLIC OF CHINA



Certification Mark:



Product:

**Crystalline Silicon Terrestrial Photovoltaic (PV) Modules
Poly-Crystalline Silicon Photovoltaic Module**

The product was tested on a voluntary basis and complies with the essential requirements. The certification mark shown above can be affixed on the product. It is not permitted to alter the certification mark in any way. In addition the certification holder must not transfer the certificate to third parties. See also notes overleaf.

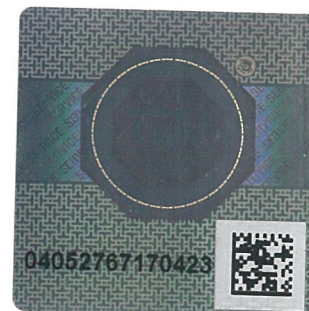
Test report no.: 704061410906-00

Valid until: 2019-09-24

Date, 2014-09-29

(Zhulin Zhang)

Page 1 of 2





Product Service

CERTIFICATE**No. Z2 14 09 84700 015****Model(s):**

PS275P-24/T, PS280P-24/T, PS285P-24/T, PS290P-24/T,
 PS295P-24/T, PS300P-24/T, PS305P-24/T, PS310P-24/T,
 PS315P-24/T, PS320P-24/T, PS325P-24/T, PS330P-24/T,
 PS335P-24/T, PS250P-22/W, PS255P-22/W, PS260P-22/W,
 PS265P-22/W, PS270P-22/W, PS275P-22/W, PS280P-22/W,
 PS285P-22/W, PS290P-22/W, PS295P-22/W, PS300P-22/W,
 PS305P-22/W, PS215P-20/U, PS220P-20/U, PS225P-20/U,
 PS230P-20/U, PS235P-20/U, PS240P-20/U, PS245P-20/U,
 PS250P-20/U, PS255P-20/U, PS260P-20/U, PS265P-20/U,
 PS270P-20/U, PS275P-20/U, PS195P-18/V, PS200P-18/V,
 PS205P-18/V, PS210P-18/V, PS215P-18/V, PS220P-18/V,
 PS225P-18/V, PS230P-18/V, PS235P-18/V, PS240P-18/V,
 PS245P-18/V, PS250P-18/V, PS130P-12/G, PS135P-12/G,
 PS140P-12/G, PS145P-12/G, PS150P-12/G, PS155P-12/G,
 PS160P-12/G, PS165P-12/G.

Parameters:

Rated Output Power
 at STC:

275 W, 280 W, 285 W, 290 W,
 295 W, 300 W, 305 W, 310 W,
 315 W, 320 W, 325 W, 330 W,
 335 W, 250 W, 255 W, 260 W,
 265 W, 270 W, 275 W, 280 W,
 285 W, 290 W, 295 W, 300 W,
 305 W, 215 W, 220 W, 225 W,
 230 W, 235 W, 240 W, 245 W,
 250 W, 255 W, 260 W, 265 W,
 270 W, 275 W, 195 W, 200 W,
 205 W, 210 W, 215 W, 220 W,
 225 W, 230 W, 235 W, 240 W,
 245 W, 250 W, 130 W, 135 W,
 140 W, 145 W, 150 W, 155 W,
 160 W, 165 W.

Construction:

Framed, with Junction box,
 Cable and Connectors.

Application Class:

Class A

Maximum System Voltage:

1000 V DC

Fire Safety Class:

Class C

**Tested
 according to:**

IEC 61215:2005
 IEC 61730-1/A2:2013
 IEC 61730-2/A1:2011
 IEC 62716:2013

**Production
 Facility(ies):**

84700

Page 2 of 2