



Outstanding performance
in weak-light conditions



Anti-PID



Positive current sorting



Excellent temperature coefficient giving
higher yields in the long term



IP68 connectors enhance the
reliability of the PV system



Certified to withstand
increased loads of up to 5400Pa



10-year product warranty
25-year performance warranty^[1]

Durability assured:



Salt mist corrosion
resistance



Ammonia corrosion
resistance

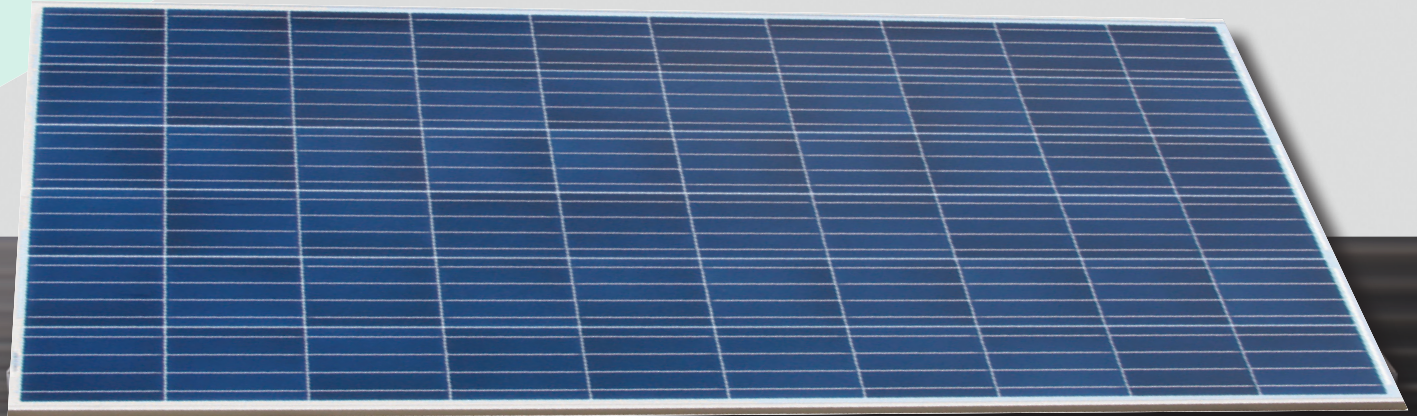


Fire test resistance



Blowing sand resistance

- Manufacturing facility certified by ISO 9001, ISO 14001 and OHSAS 18001
- Internal quality control has standards higher than both IEC and UL
- Product quality is assured through the use of branded components
- Free module recycling through PV Cycle Association membership^[2]



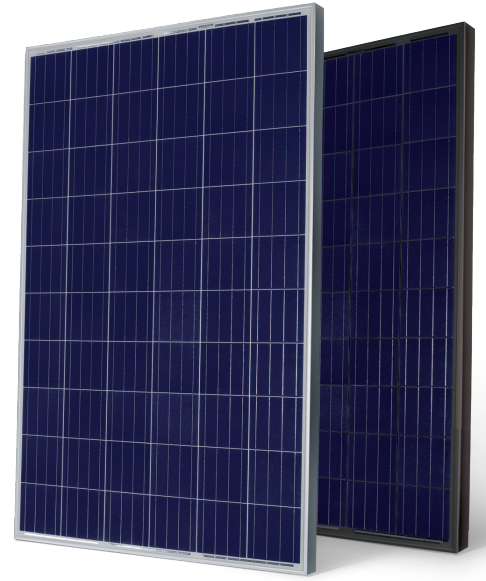
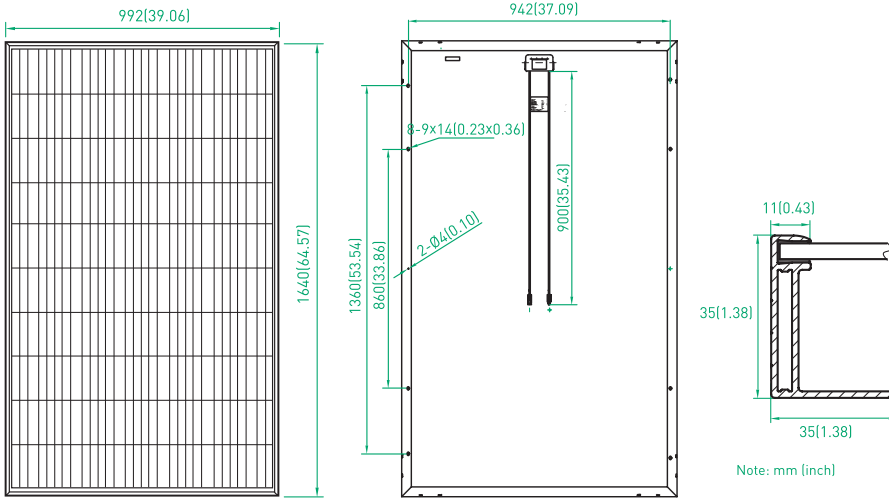
Premium Modules

260-270W^{POLY}

Note: This datasheet is not legally binding. Phono Solar reserves the right to make specifications changes without notice. Further information can be found on our website: www.phonosolar.com

1. In compliance with our warranty terms and conditions.
2. In PV Cycle member countries only, see: www.pvcycle.org

PREMIUM SOLAR MODULES 260-270W POLY



Note: mm (inch)

MECHANICAL CHARACTERISTICS

| | |
|---------------------|---|
| Solar Cells | Polycrystalline 156mm x 156mm square, 6 x 10 pieces in series |
| Dimension | Length: 1640mm [64.57 inch] |
| | Width: 992mm [39.06 inch] |
| | Height: 35mm [1.38 inch] |
| Weight | 19kg (41.9 lbs) |
| Front Glass | 3.2mm toughened glass |
| Frame | Anodized aluminium alloy |
| Cable | 4mm ² (IEC) / 12AWG (UL), 900mm |
| Junction Box | IP 68 rated |

ABSOLUTE MAXIMUM RATING

| Parameter | Values |
|----------------------------------|----------------------------|
| Operating Temperature | From -40 to +85°C |
| Hail Diameter @ 80km/h | Up to 25mm |
| Surface Maximum Load Capacity | Up to 5400Pa |
| Maximum Series Fuse Rating | 15A |
| IEC Application Class (IEC61730) | A |
| Fire Rating (IEC61730) | C |
| Module Fire Performance (UL1703) | Type 1 |
| Maximum System Voltage | DC 1000V (IEC) |
| | DC 600V (UL) / 1000V (ETL) |

ELECTRICAL TYPICAL VALUES^[1]

| Model | Rated Power (P _{mpp}) | Tolerance | Rated Current (I _{mpp}) | Rated Voltage (V _{mpp}) | Short Circuit Current (I _{sc}) | Open Circuit Voltage (V _{oc}) | Module Efficiency (%) |
|-------------|---------------------------------|-----------|-----------------------------------|-----------------------------------|--|---|-----------------------|
| PS260P-20/U | 260W | 0~+5W | 8.54A | 30.6V | 8.90A | 38.0V | 15.98 |
| PS265P-20/U | 265W | 0~+5W | 8.61A | 30.8V | 9.00A | 38.1V | 16.29 |
| PS270P-20/U | 270W | 0~+5W | 8.71A | 31.0V | 9.10A | 38.2V | 16.60 |

WEAK LIGHT PERFORMANCE

| Intensity [W/m ²] | I _{mpp} | V _{mpp} |
|-------------------------------|------------------|------------------|
| 1000 | 1.0 | 1.000 |
| 800 | 0.8 | 0.996 |
| 600 | 0.6 | 0.990 |
| 400 | 0.4 | 0.983 |
| 200 | 0.2 | 0.952 |
| 100 | 0.1 | 0.921 |

TEMPERATURE CHARACTERISTICS

| | |
|--|------------|
| NOCT (Nominal Operation Cell Temperature) | 45°C ± 2°C |
| Voltage Temperature Coefficient | -0.31%/k |
| Current Temperature Coefficient | +0.06%/k |
| Power Temperature Coefficient | -0.40%/k |

PACKING CONFIGURATION

| | | |
|-----------------------------|--------|--------|
| Container | 40' HQ | 20' GP |
| Pieces per container | 784 | 264 |

1. Measurement conditions under irradiance level of Standard Test Conditions(STC): 1000W/m², Air mass 1.5 Spectrum, cell temperature of 25°C.