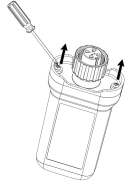


# 1

## GPRS Stick Installation

### Step 1:

Use a screwdriver to open the Smart GPRS.



### Step 2:

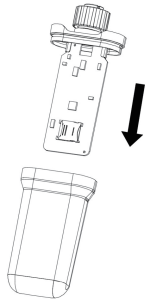
- Slide cover to the left to unlock and open;
- Insert the card into the slot (Make sure the core is facing down);
- Close the cover;
- Slide cover to the right side to close.

### Note:

1. Please check from the side of the slot to make sure the SIM card core has sufficient contact with the card slot.
2. Please make sure the cover has been slide properly, otherwise the signal might be reduced.

### Step 3:

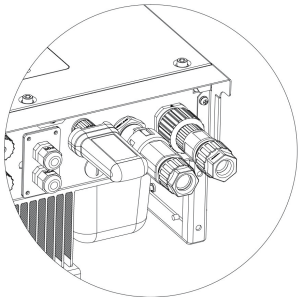
Insert the Smart GPRS board into the shell.



### Step 4:

Insert the Smart GPRS into the inverter WiFi/GPRS interface and tighten the dongle.

Note: label face to front.



Note: The device must be away from strong magnetic fields generated by large electrical equipment, such as microwaves stoves, refrigerators, wireless phones, photovoltaic panels and metal walls to ensure communication quality. Communication quality might be affected by lightning.

# 2

## APP Installation

Scan the QR Code below to download and install the FoxCloud APP on your smartphone.

Please choose from below operator:

- Tata
- Aircel
- Airtel
- Vodafone (Please contact Vodafone service to activate the SIM card before use.)



HUAWEI AppGallery



Google Play



Apple App Store

### Step 2:

Select 'Installer' and enter Installer name, then click 'OK'.

We suggest you complete all information to ensure after-sales service.

Note:

Installer: The installer

Agent: The agent/distributor/installation company.



## For End User

### Step 1:

Please click 'Sign Up', enter end user's information to complete the end user account registration.

### Step 2:

Select 'End User' then scan the GPRS bar code on the Smart GPRS, and click 'OK'. We suggest you complete all information to ensure after-sales service.



# 4

## Create A Plant



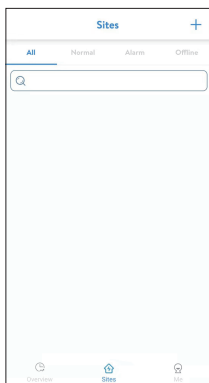
## For Installer

### Step 1:

Open the APP, login with your Installer/agent account.

## Step 2:

Press the '+' icon on the homepage to add plant. Press the scan icon next to the 'Datalogger List' to scan the QR code label on front side of the Smart GPRS.

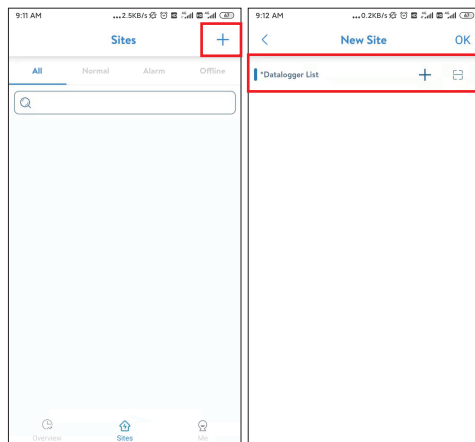


Note: After starting the APP, it will pop-up a message 'Whether to allow positioning permissions', please select 'Allow'. For the PV Size, please fill in the actual capacity of the installed solar panels.



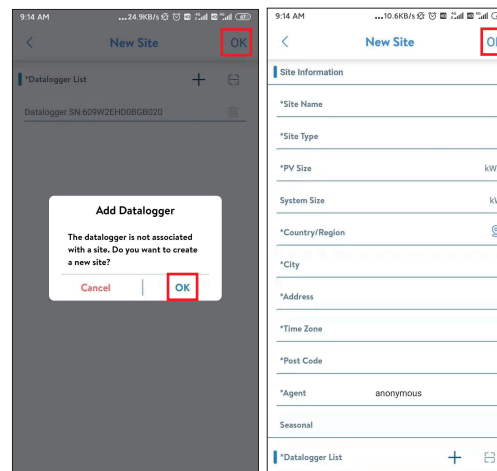
## Step 2:

Press the '+' icon on the homepage to add plant. Press the scan icon next to the 'Datalogger List' to scan the QR code label on front side of the Smart GPRS.



## Step 3:

After scanning code successfully, click 'OK' on the top right corner of the page, APP will pop-up a message 'Add Datalogger', please click 'OK'. Complete all required information and click 'OK' on the top right corner of the page.



The manual is updated frequently. Please scan the code to download the latest version.

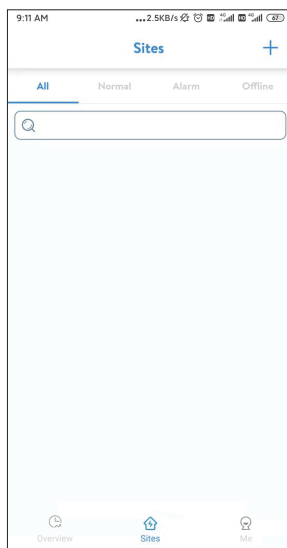
## For End User

### Step 1:

Open the APP, login with your end user account.



Note: After starting the APP, it will pop-up a message 'Whether to allow positioning permissions', please select 'Allow'. For the PV Size, please fill in the actual capacity of the installed solar panels.



Note: If SN has been bound to the plant already, APP will go to the page as beside. If SN has not been bound before, please refer to step 3.

